



Vision Washing Ltd

Vision Washing Ltd, is the sister company of VISION Group, Vision today symbolizes a name of the flagship company, 2007 the mother factory of Vision started its operation at savar with a boarder aspects.

The voyage started at Mirpur, Dhaka in 1995 with a greater passion for **MAKINGAWORLDOFFASHION**.

Today, the company has burgeoned into one of the top line conglomerates in Bangladesh and holding the strong leadership position in the RMG sector. The company is dedicated and committed to excellence in marketing, merchandising, product development and logistics. We have proven reputation throughout the global apparel market as one of the foremost factories in Bangladesh for our commitment to production capacity, quality, lead-time and total value. Our management is aware of the latest trends of business and fashion.

Vision Washing Ltd. is a pioneer washing plant that caters for a complete range of all dry & wet processes. It is the most recognized washing plant in the RMG sector in Bangladesh. It has over 09 years of washing experience in its own well managed facility. The facility, equipped with a modern Effluent Treatment Plant (ETP) is capable of handling around 15,000 pieces of denim washes. It has extensive dry process capabilities. The management is concerned about the constant need for upgrading its equipment. The company is working closely with machine suppliers from China and Turkey, the well-known places for wash expertise, to enhance its machines gradually.





Vision Washing Ltd



Capabilities:

- ❖ Enzyme Wash
- ❖ Enzyme Stone Wash
- ❖ Garments Wash
- ❖ Bleach Wash
- ❖ Tie Wash
- ❖ Acid Wash
- ❖ Towel Wash
- ❖ Over Dye
- ❖ Rubber ball Wash
- ❖ Tie Dye
- ❖ Resin dip





Vision Washing Ltd



Capacities:

- ❖ Hand Sanding capacity 15000 pcs per day
- ❖ Whisker 5000 pcs daily
- ❖ Tacking 6000 pcs daily
- ❖ PP Spray 15000 pcs daily
- ❖ 3D Wrinkle 1000 pcs daily
- ❖ Grinding/destroy 2000 pcs daily





Vision Washing Ltd

Details capacities of Vision Washing

Wash TYPE	SUB TYPE	Can Do? (Yes/No)	Avg. WASH Cap. (Pieces/Day)
Dry Process	Hand Scraping / Rodeo Effect (Front & Back)	Yes	10000pcs 12000pcs
Dry Process	Hand Scraping (All Over)	Yes	10000pcs 12000pcs
Dry Process	Whisker by Scraping (Front Thigh + Back Knee)	Yes	10000pcs 12000pcs
Dry Process	PP Spray (On Front Area and Back Seat Area)	Yes	10000pcs 12000pcs
Dry Process	PP Spray (All over)	Yes	10000pcs 12000pcs
Dry Process	PP Sponging	Yes	10000pcs 12000pcs
Dry Process	PP Sponging (All over)	Yes	10000pcs 12000pcs
Dry Process	PP Chalk	Yes	10000pcs 12000pcs
Dry Process	Pigment Spray (Front Area and Back set)	Yes	10000pcs 12000pcs
Dry Process	Permanent 3D Whisker Front & Back (Round shape with Local Resin Application)	Yes	10000pcs 12000pcs
Dry Process	Wrinkle Front & Back (With resin Permanent)	Yes	10000pcs 12000pcs
Dry Process	Wrinkle /3D Whisker Front & Back (Non Permanent)	Yes	10000pcs 12000pcs
Dry Process	Permanent 3D Whisker Front & Back (Round shape With Resin Application All Over The Garment)	Yes	10000pcs 12000pcs
Dry Process	Permanent All Over Crush Effect With Resin Application All Over The Garment	Yes	10000pcs 12000pcs
Dry Process	Tagging	Yes	10000pcs 12000pcs
Dry Process	Grinding	Yes	10000pcs 12000pcs
Dry Process	Damage (Warp disappear / Heavy Destruction)	Yes	3000pcs to 4000pcs
Dry Process	Coating all over	Yes	4000pcs to 5000pcs
Dry Process	Local tint / Sponging	Yes	4000pcs to 5000pcs
Dry Process	Spray Whisker	Yes	4000pcs to 5000pcs
Dry Process	Crunch /Tie Effect (Tie/ Bag/Rope)	Yes	3000pcs to 4000pcs



Vision Washing Ltd

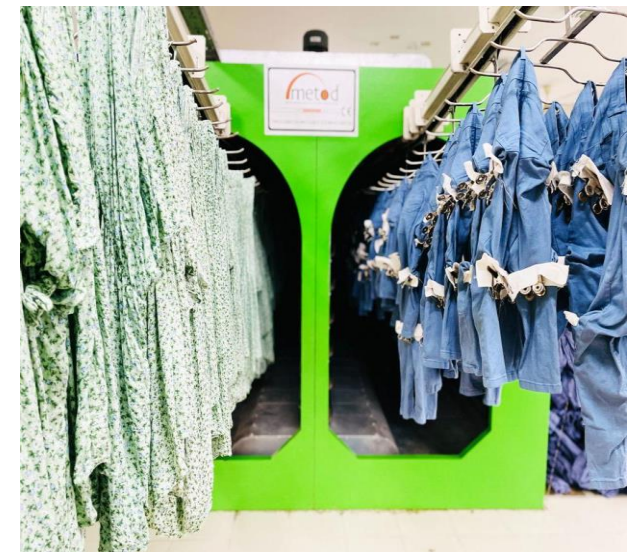
Details capacities of Vision Washing

Wash TYPE	SUB TYPE	Can Do? (Yes/No)	Avg. WASH Cap. (Pieces/Day)
Dry Process	Splash Effect by pigment	Yes	3000pcs to 4000pcs
Wet Process	Rinse Wash	Yes	70000pcs to 80000pcs
Wet Process	Silicon Wash	Yes	60000pcs to 70000pcs
Wet Process	Enzyme Wash	Yes	40000pcs to 45000pcs
Wet Process	Heavy Enzyme Wash	Yes	25000pcs to 30000pcs
Wet Process	Stone Enzyme Wash	Yes	15000pcs to 20000pcs
Wet Process	Perlite Wash	Yes	10000pcs to 15000pcs
Wet Process	Stone Enzyme Bleach	Yes	8000pcs to 10000pcs
Wet Process	Bleach	Yes	7000pcs to 10000pcs
Wet Process	Acid wash/ snow wash/salt wash / Moon Wash	Yes	3000pcs to 4000pcs
Wet Process	Rubber ball wash	Yes	20000pcs to 25000pcs
Wet Process	Tint	Yes	20000pcs to 25000pcs
Wet Process	Resin dip	Yes	On processesing
Wet Process	Towel Bleach	Yes	3000pcs to 4000pcs
Garments Dye	Reactive	Yes	3000pcs to 4000pcs
Garments Dye	Direct	Yes	3000pcs to 4000pcs
Garments Dye	Dischargeable	Yes	2000pcs to 3000pcs
Garments Dye	Pigment	Yes	2000pcs to 3000pcs
Garments Dye	Florescent / Neon Color	Yes	2000pcs to 3000pcs
Garments Dye	Tie Dye one color	Yes	2000pcs to 3000pcs

Vision Washing Ltd

Machine & Equipment's:

- 6 set Sample washing machine
- 2 set Sample Hydro machine
- 3 set Sample dryer
- 5 set Yilmak Front loading
- 5 set Hydro machine
- 18 set Dryer
- 8 set Belly washer
- 1 set Static curing oven
- 1 set Laser Machine
- 4 set PP Spray cabinet
- 52 set Hand Saniding
- 2 set 3D
- Destroy



Vision Washing Ltd

Utilities:

- Effluent Treatment Plant – Capacity 200 cubic meter per hour.
- 28,000SQFT constructed new working area
- Chemical Storage.
- Lab facility.
- Compressor Room.
- Gas Connection.
- Substation
- Boiler room.





Vision Washing Ltd



Strict Quality Procedure: We are committed to providing the highest quality products. All garment pass through strict quality check before we start any dry or wet process on it. before entering into the wet process zone. After wash, a final quality check is placed to ensure highest quality level.

Clients: Our customers are typically the top brand importers and retailers from the United States as well as Western European countries as follows:



SPRINGFIELD



suzannegrae

KappAhl



Our Principle Strength (workforce): We are proud of our employees who have chosen to grow with us. With their knowledge and expertise has transformed the company with a knowledge base & excellence of work in production and quality. Our present manpower strength is 315 including dry process.



Vision Washing Ltd



CSR Policy and Activities:

Since its inception, the company has been committed to creating a safe, healthy and compliant working environment for all its employees. It is among the first few factories ensure safe, secure, productive and enjoyable workplace atmosphere. The CSR Policy of the company is conceived & directly supervised by the Managing Director & senior Management. We have a separate compliance and welfare team who implements the programs at the workers level. We measure the impact of our CSR activities through regular Internal and External Audit.

- ✓ Vision Blood For Life"-an innovative voluntary blood donation program
- ✓ Annual Eye & Dental Camp
- ✓ Relief Aid in Natural Disasters
- ✓ Tree Plantation Program
- ✓ Vaccination for Pox
- ✓ "AmraoPari"- An education program for the poor children of the locality
- ✓ Patronization from the sense of social liability

Incentives and motivational programs for the employees:

- ❖ May Day award to the best workers
- ❖ Eid Day's best dress up prize
- ❖ Prize Bond for New born baby
- ❖ Tour program for executive level
- ❖ Outdoor & Indoor Sports
- ❖ Celebration of Wedding & Birthday
- ❖ Festival gift & Greetings for staff of all religions
- ❖ Distribution of fruits and milk produced in the farms of the factory



Vision Washing Ltd

Social Communication and awareness raising:

- Vision Monthly News Bulletin

Recreational activities:

- Celebration of PohelaBoishakh-Bangla new Year, 31st December and New Year eve, observation of 26th march-The Great Independence day, 14th December-ShahidBuddhijibiDibash and 16th December –The Great Victory Day.
- Annual Picnic
- Quarterly Cultural Program
- Weekly cultural rehearsal
- New year's Dinner/Lunch
- Iftar Party in the Holy Ramadan
- Vision Karu Polly
- Prayer Hall
- Dormitory of the Staff
- Vision Ladies Club
- Transport facility for workers and staff
- Skill development program



Vision Washing Ltd

REGISTERED OFFICES & SISTER CONCERN:

- ↔ Vision Apparels (Pvt.) Limited
- ↔ Vision Garments Limited
- ↔ Vision Composite Knit Limited
- ↔ Taurus Styles Limited
- ↔ Vision Washing Limited
- ↔ Vision Embroidery Limited
- ↔ Vision Accessories Limited

Board of Directors:



Abu Sayed Mohammad Mahfuz
Chairman
Vision Group



Dr. A K M Hamid
Managing Director
Vision Group



A H Abdul Gaffar
Director
Vision Group



Ershad Hazari
Director
Vision Group



Concluding Speech: We welcome all our prospective customers to visit and evaluate our recognized firsthand factories which are engaged in **MAKING A WORLD OF FASHION**. You can also take a tour at our web portal <https://vision-bd.com> or send an e-mail to ahagaffar@vision-bd.com to meet your queries. We are always open for you. We are endless in our journey towards our final motto- Business and welfare runs together.

CONTACT US :B-47, Purbo Rajashan, P.S: Savar, Dhaka.
Email: wash@vision-bd.com, web: www.vision-bd.com

Tel: 7741782, 7741783

Thank You