



VISION GROUP



[COMPANY VIDEO](#)

[WASH UNIT](#)

[VG Full Video](#)



# VISION JOURNEY

The journey of Vision began in **1995** with the establishment of **VISION APPAREL (PVT) LTD** in Mirpur.

In **2007**, the Vision Group expanded it's operations by adding several units, including **Vision Garments Ltd.**, **Vision Composite Knit Ltd.**, **Vision Washing Ltd.**, **Vision Accessories Ltd.**, **Vision Embroidery Ltd.**



**In 1995 MIRPUR UNIT**



**In 2007 SAVAR UNIT**

# APEX MANAGEMENT



**Dr A K M Hamid**  
**Managing Director**



**A H A Gaffar**  
**Director**

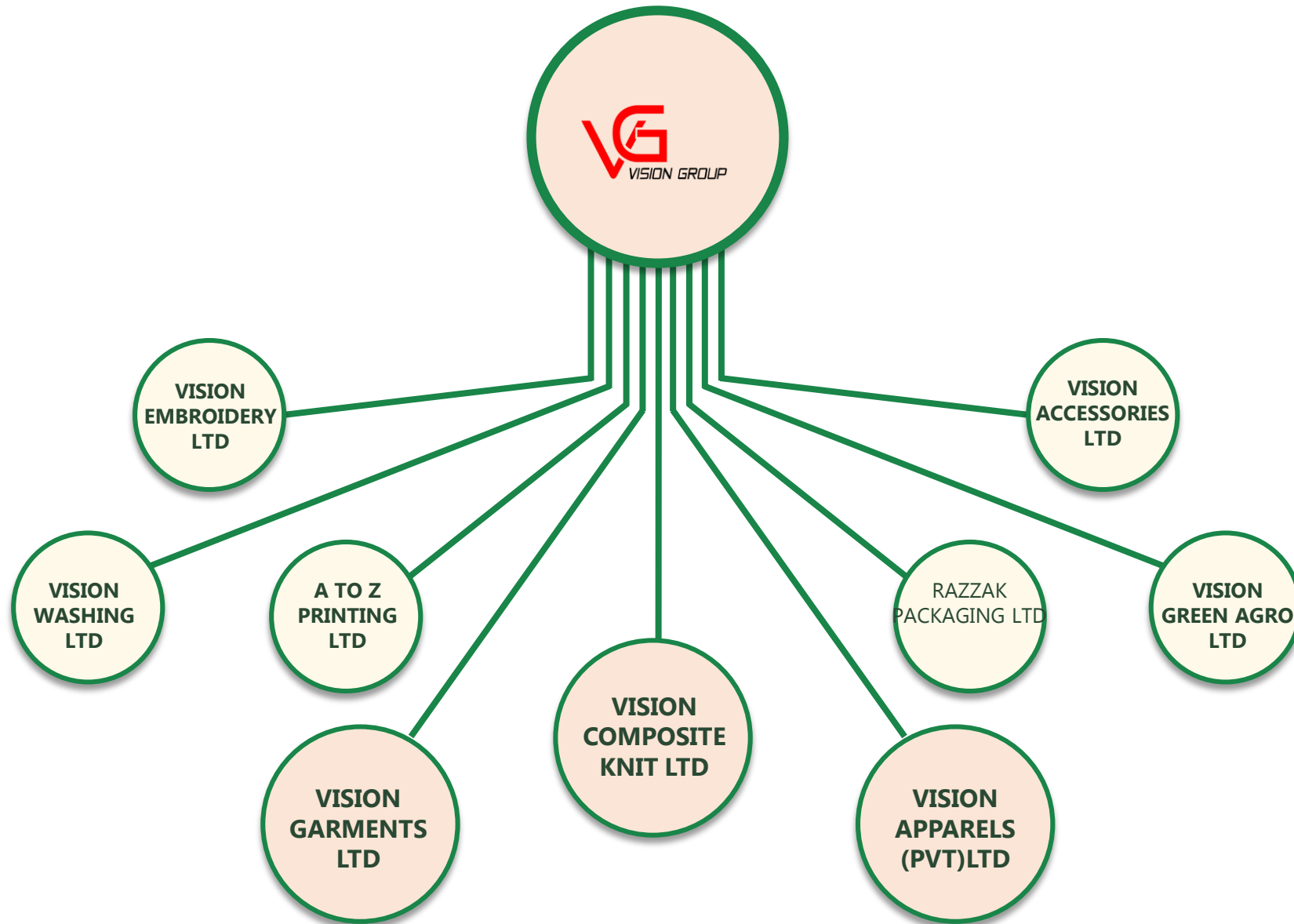


**A S M Mahfuz**  
**Chairman**



**Ershad Hazari**  
**Director**

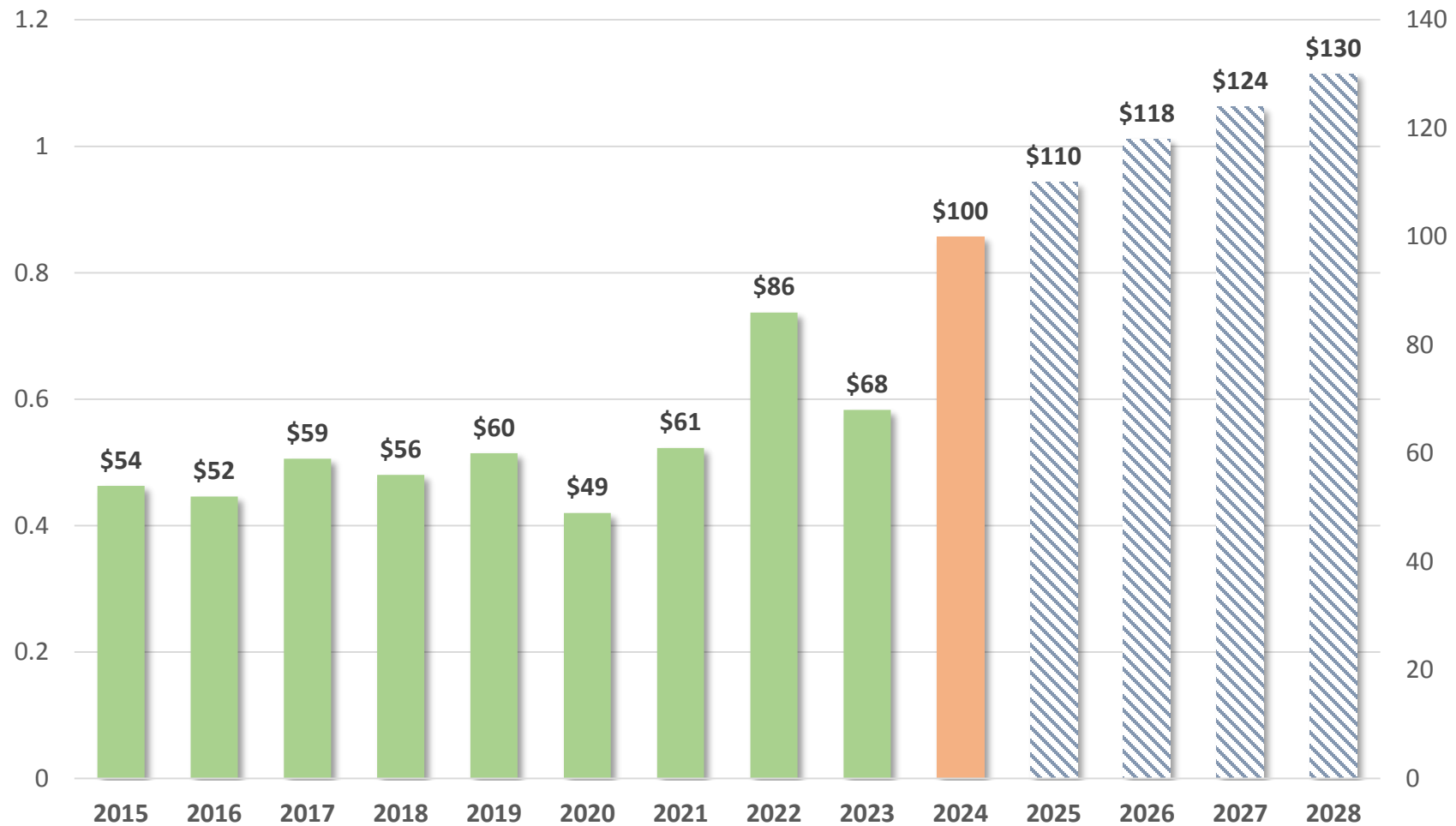
# VISION ASSOCIATE COMPANIES



# MANUFACTURING CAPACITY

Unit Name	Capacity	Product Type	Line
Vision Apparels (Pvt.) Ltd	6,00,000 pcs/month.	Woven Tops	16
Vision Garments Ltd.	7,00,000 pcs/month	Woven Bottoms	22
Vision Composite Knit Ltd.	7,00,000 pcs/month	Woven Tops	20
Vision Washing Ltd.	32,00,000 pcs/month.	Woven (Denim, Non-denim) Tops & Bottoms	
Vision Accessories Ltd.	27,500 GG/month	Button	
Vision Embroidery Ltd.	10,40,00,000 stitch/day	All type regular Emb.	
Razzak Packaging Ltd.	50,000 unit/month	Carton	
A to Z Printing Ltd.	4,00,000 pcs/month	All type placement print	
Vision Garments Ltd. Unit-2	4,00,000 pcs/month	Woven Bottoms (Proposed)	13

# VISION GROWTH & FUTURE PLAN-TILL 2028



## OUR CUSTOMERS



next



LC Waikiki



LPP



MONOPRIX

newflame



O'STIN



SPRINGFIELD

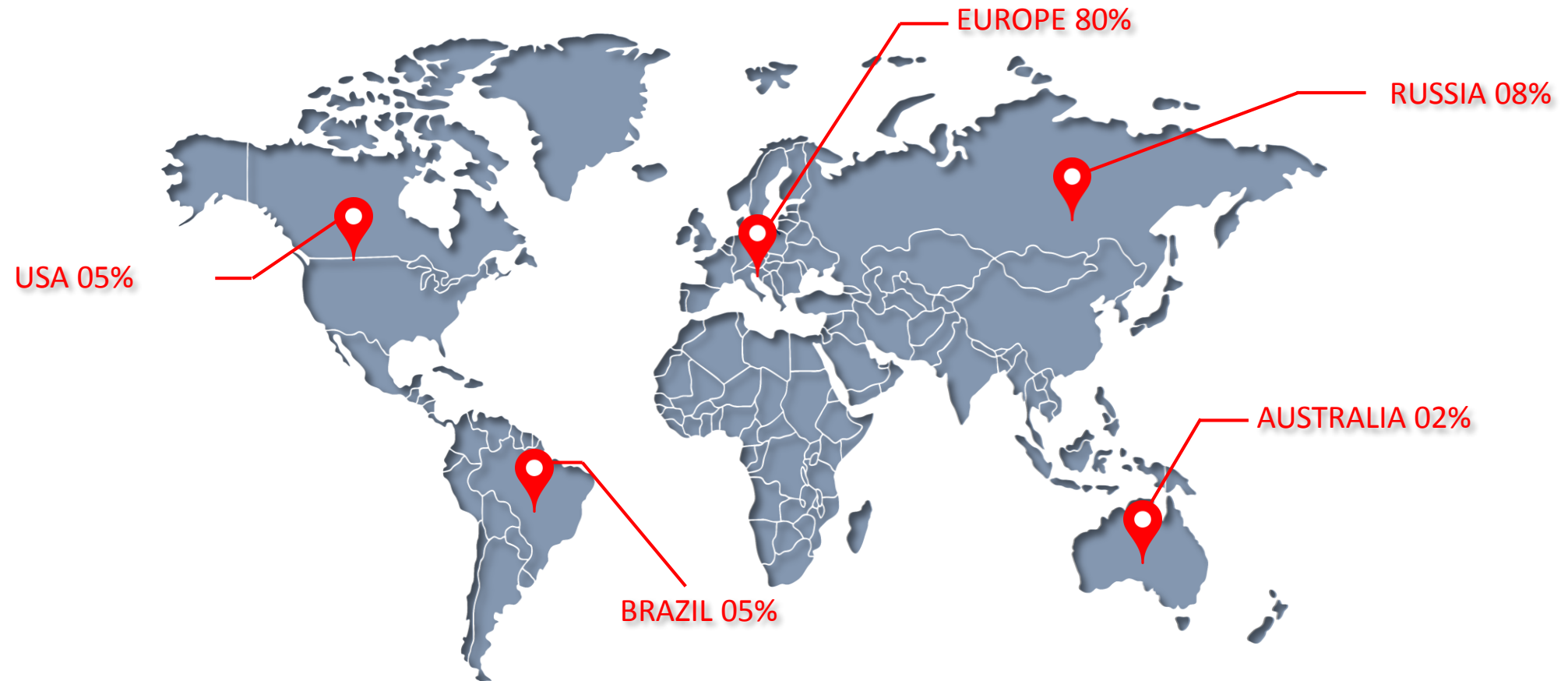
NAF NAF

suzannegrae

LA HALLE

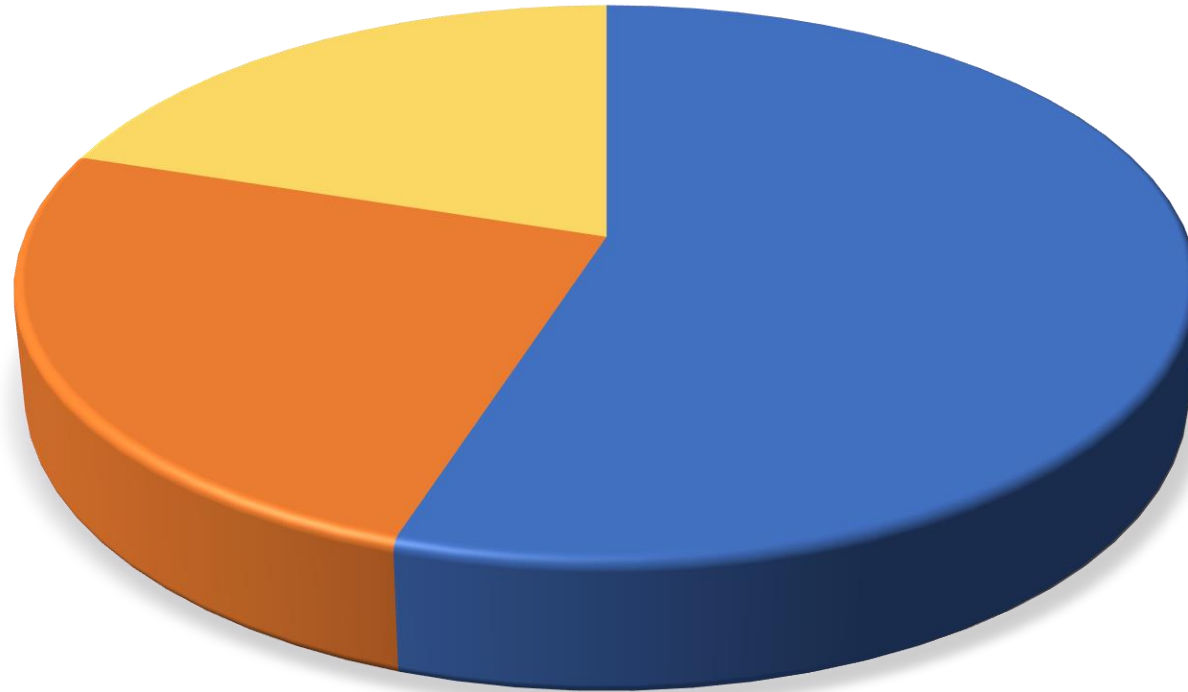


# VISION CUSTOMERS HUB





## VISION PRODUCT CATEGORIES

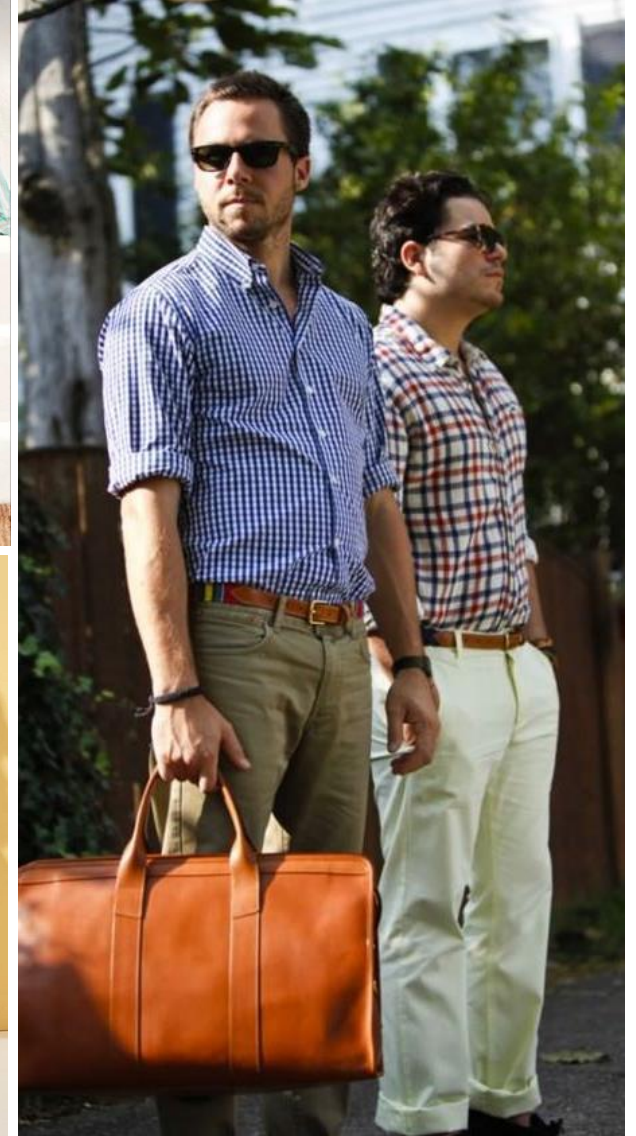


■ Kids 55%

■ Men's 25%

■ Women's 20%

# PRODUCT RANGE



# CERTIFICATIONS

**ACCORD**  
on Fire and Building Safety in Bangladesh



**100%**

**Higg  
Index**



**77%**

 **BetterWork**



**87%**



**OVERALL RATING – 'B'**



**SOCIAL & LABOR  
CONVERGENCE**





# RECENT INVESTMENTS & IMPLEMENTS



ETP



WASHING



IE



ERP



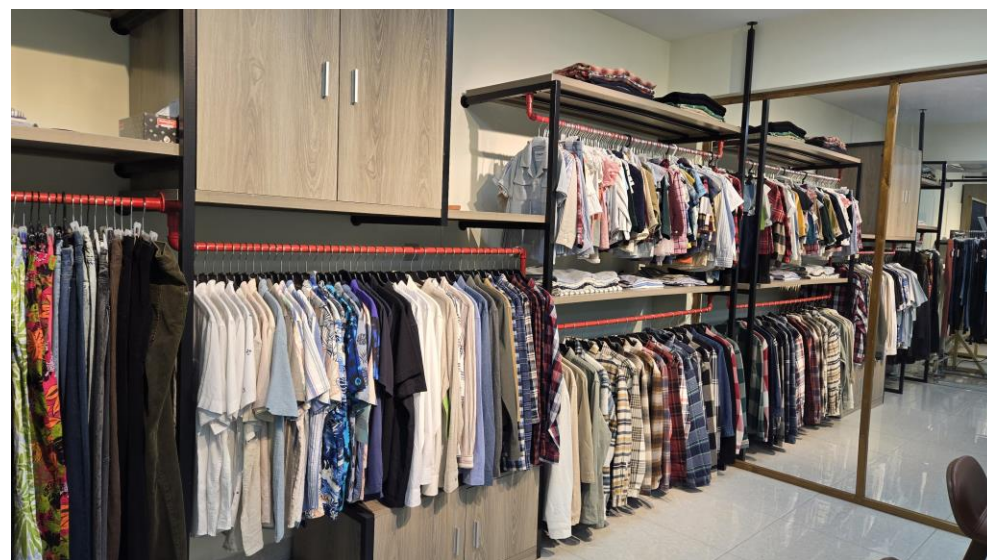
DESIGN STUDIO



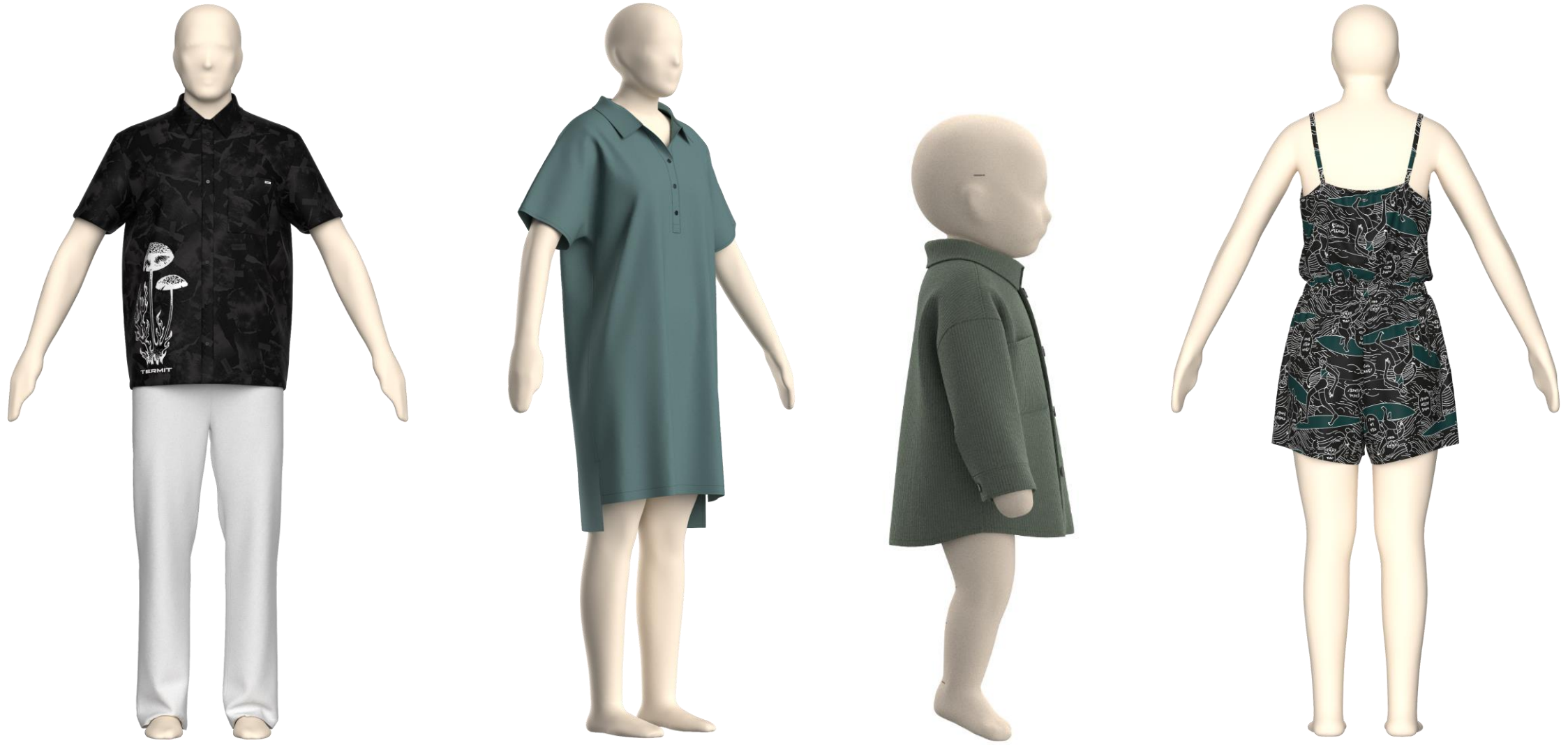
3D



# VISION DESIGN STUDIO



# 3D SUPPORT

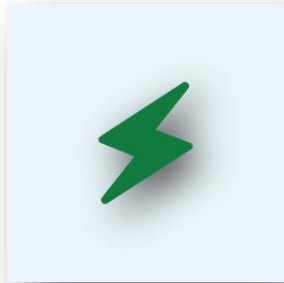




# VISION LAB FACILITIES



# IMPACTS & ACCOMPLISHMENT 2022-2023



## ELECTRICITY

100% LED LIGHT  
INVERTER IN WASHING  
MACHINES  
60% USAGE OF SERVO MOTORS

YEAR 2022 : 0.0633 kWh/pcs  
YEAR 2023 : 0.0571 kWh/pcs

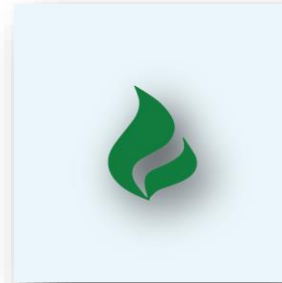
**REDUCTION: 11%**



## DIESEL

YEAR 2022 : 0.00082 L/pcs  
YEAR 2023 : 0.00077 L/pcs

**REDUCTION: 6.5%**



## NATURAL GAS

ENERGY EFFICIENT BOILER

STEAM LINE MAINTENANCE & MONITORING  
BOILER ECONOMIZER

YEAR 2022 : 0.0848 CUM/pcs  
YEAR 2023 : 0.0820 CUM/pcs

**REDUCTION: 4%**



## OCTANE

YEAR 2022 : 0.000061 L/pcs  
YEAR 2023 : 0.000048 L/pcs

**REDUCTION: 21%**



## WATER

PROCESS OPTIMIZATION IN  
WASHING MACHINES

E-FLOW TECHNOLOGY

**25% PROCESS WATER RECYCLE**

RAINWATER HARVESTING

YEAR 2022 : 0.0099 CUM/pcs  
YEAR 2023 : 0.0085 CUM /pcs

**REDUCTION: 10%**



# SUSTAINABLE GOAL & ACTION PLAN TILL 2030

2024



200 kWh Solar Electricity



100% Steam Lines Insulation

2027 - 2028



100% Servo Motors



100% G-Trap for Irons

2025 - 2026



100 kWh Solar Electricity



100 kWh Solar Electricity

2029 - 2030



200 kWh REC



200 kWh REC

# Thank you so much

REACH US

[www.vision-bd.com](http://www.vision-bd.com)